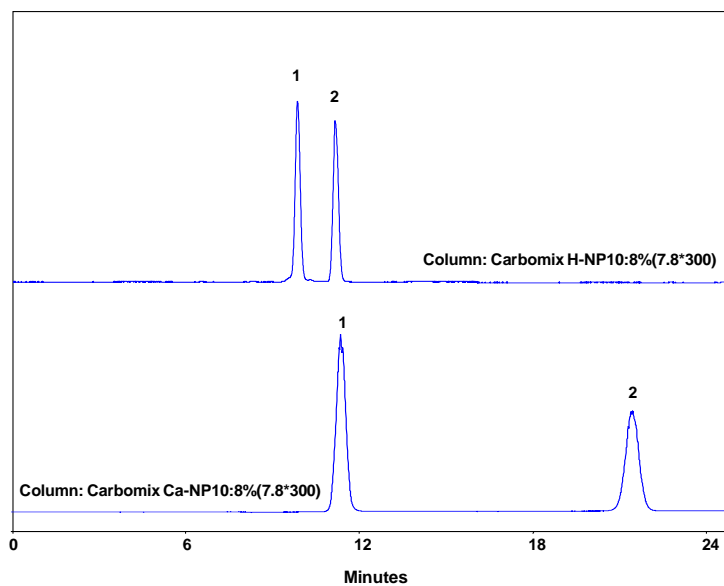
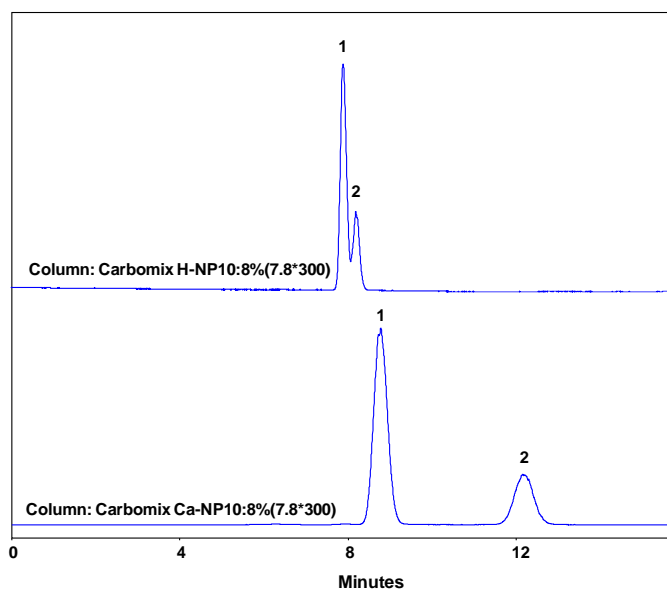




**Analysis of sugar and sugar alcohol on Carbomix[®] NP10 (10 μ m, 8%, 7.8x300 mm)
- Comparison of Carbomix[®] H and Carbomix[®] Ca**



Columns: Carbomix[®] H-NP10:8% and Carbomix[®] Ca-NP10 (10 μ m, 8% crosslinking, 7.8x300 mm)
Mobile Phases: TFA solution, pH 2.5 for Carbomix[®] H; H₂O for Carbomix[®] Ca
Flow Rate: 0.6 mL/min
Detection: ELSD
Samples: 1. xylose; 2. xylitol



Columns: Carbomix[®] H-NP10 and Carbomix[®] Ca-NP10 (10 μ m, 8% crosslinking, 7.8x300 mm)
Mobile phase: TFA solution, pH 2.5 for Carbomix[®] H; H₂O for Carbomix[®] Ca
Flow rate: 0.06 mL/min
Detection: ELSD
Samples: 1. Maltose 2. Maltitol

Keywords: Carbohydrate, Carbomix, ELSD, sugar and sugar alcohol, xylose and xylitol, maltose and maltitol