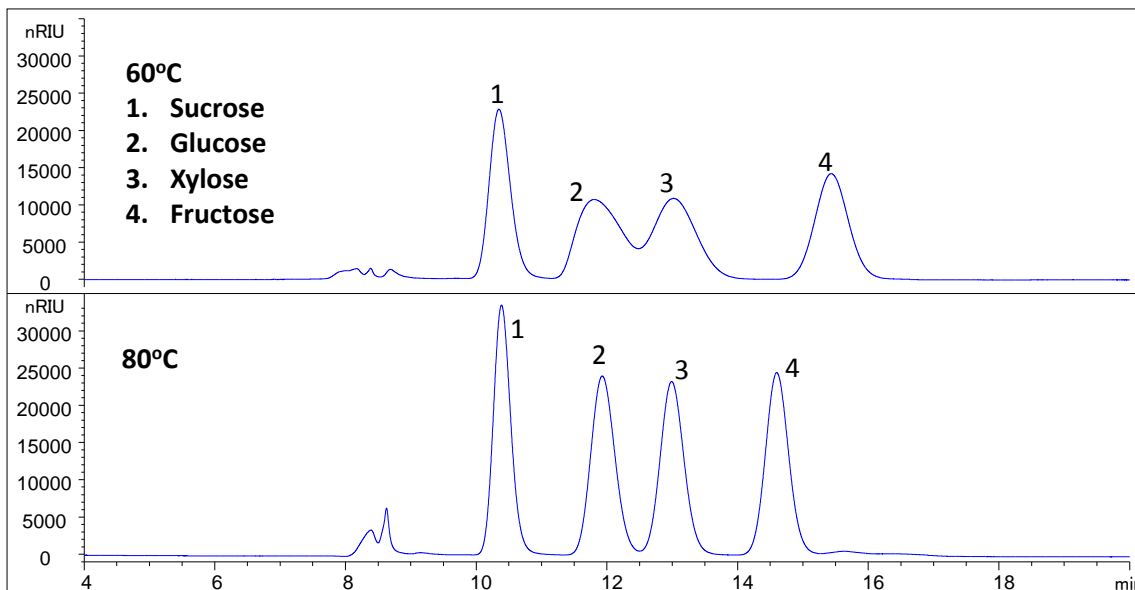




**Column Temperature Effect on Sugar Separations on Carbomix[®]
Ca-NP5:8% (5 μ m, 8%, 7.8x300 mm)**



Column: Carbomix[®] Ca-NP5:8% (5 μ m, 8% crosslinking, 7.8x300 mm)
Mobile Phase: water
Temperature: 60 °C, 80 °C
Flow Rate: 0.5 mL/min
Detection: RI
Injection volume: 2.5 μ L
Samples: Sucrose/Glucose/Xylose /Fructose (20 mg/mL each)

Keywords: Carbohydrate, Carbomix, Calcium form, NP5, 8% crosslinking, glucose, sucrose, xylose, fructose, column temperature, 60 °C, 80 °C