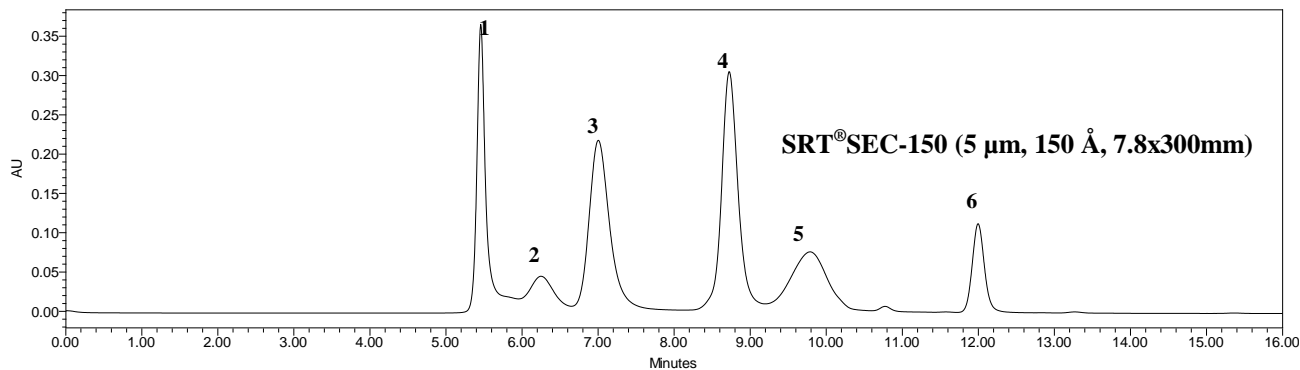
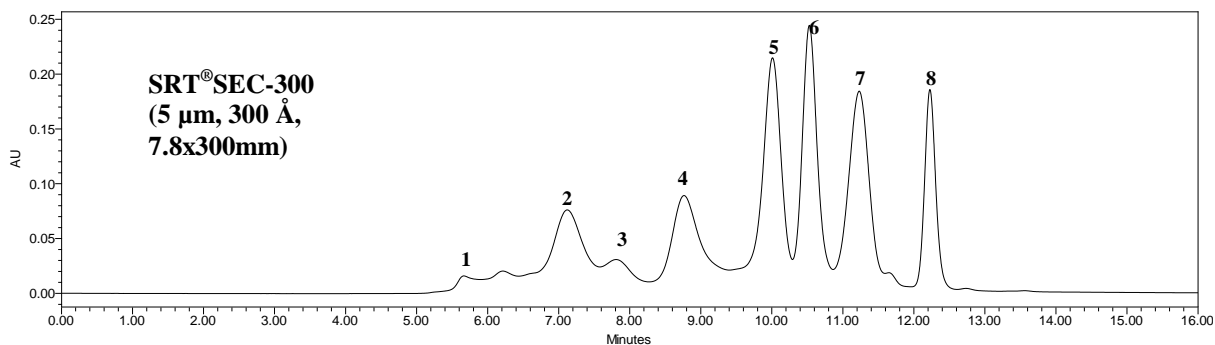




## Separation of Peptide in protein mixture



Mobile Phase: 150 mM phosphate buffer, pH 7.0  
Flow Rate: 1.0 mL/min  
Temperature: 22°C  
Detection: UV 214 nm  
Samples: 1. Thyroglobulin; 5.46 min; 2. BSA Dimer; 6.25 min; 3. BSA; 7.00 min;  
4. Ribonuclease A; 8.72 min; 5. Poly-DL-alanine (from Sigma 25281-63-4,  
MW 1,000-5,000); 9.78 min; 6. Uracil; 12.00 min



Mobile Phase: 150 mM phosphate buffer, pH 7.0  
Flow Rate: 1.0 mL/min  
Temperature: 22°C  
Detection: UV 214 nm  
Samples: 1. Thyroglobulin; 5.46 min; 2. BSA Dimer; 6.25 min; 3. BSA; 7.00 min;  
4. Ribonuclease A; 8.72 min; 5. Poly-DL-alanine (from Sigma 25281-63-4,  
MW 1,000-5,000); 9.78 min; 6. Uracil; 12.00 min

Keywords: size exclusion, SRT, peptides, proteins, poly-alanine