



Separation of Dextran on SRT[®]-300

Column: SRT[®] 300 (5 μ m, 300 Å , 7.8 x 300 mm)
Mobile Phase: 150 mM phosphate Buffer, pH 7.0
Flow rate: 1.0 mL/min
Detection: RI (30 $^{\circ}$ C)
Injection volume: 20 μ L

Sample: 10 mg/mL in mobile phase
1 kD, 5 kD, 12 kD, 25 kD, 50 kD, 80 kD,
150 kD, 270 kD, 410 kD and 670 kD
Column temperature: 25 $^{\circ}$ C
Pressures: 600 psi

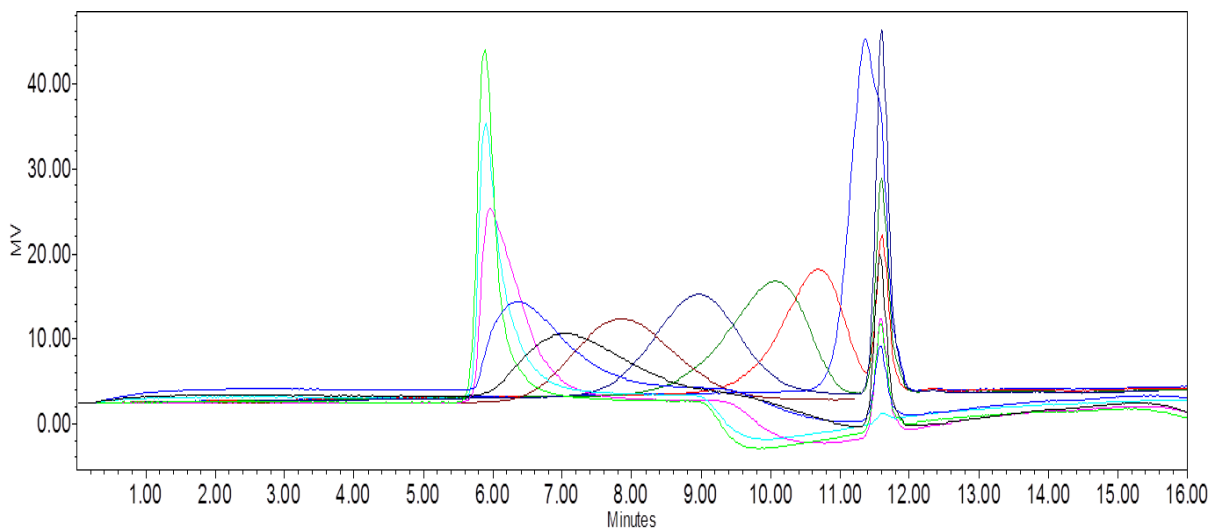


Figure 1. Chromatogram overlays for Dextran standards on SRT[®]-300, 5 μ m, 7.8 x 300 mm.

Molecular weight (Da)	Log MW	Elution volume (mL)
1000	3	11.366
5000	3.698970004	10.692
12000	4.079181246	10.071
25000	4.397940009	8.962
50000	4.698970004	7.834
80000	4.903089987	6.991
150000	5.176091259	6.368
270000	5.431363764	5.955
410000	5.612783857	5.895
670000	5.826074803	5.883

Table 1. Dextran molecular weight and retention time on SRT[®] 300, 5 μ m, 7.8 x 300 mm.

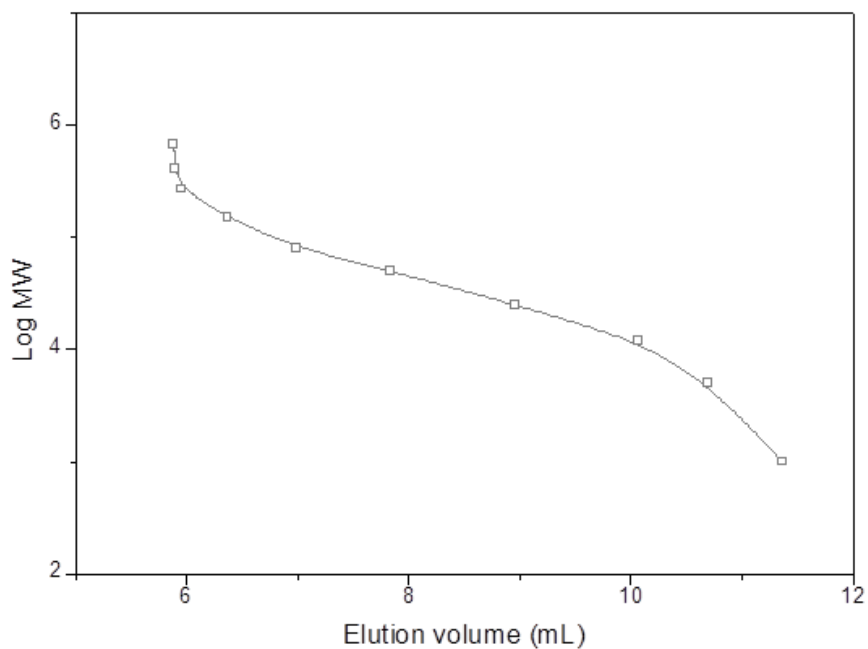


Figure 3. Calibration curve of Dextran molecular weight vs. Elution volume on SRT[®] 300.

Keywords : size exclusion, SRT, Dextran, SRT 300, polysaccharide