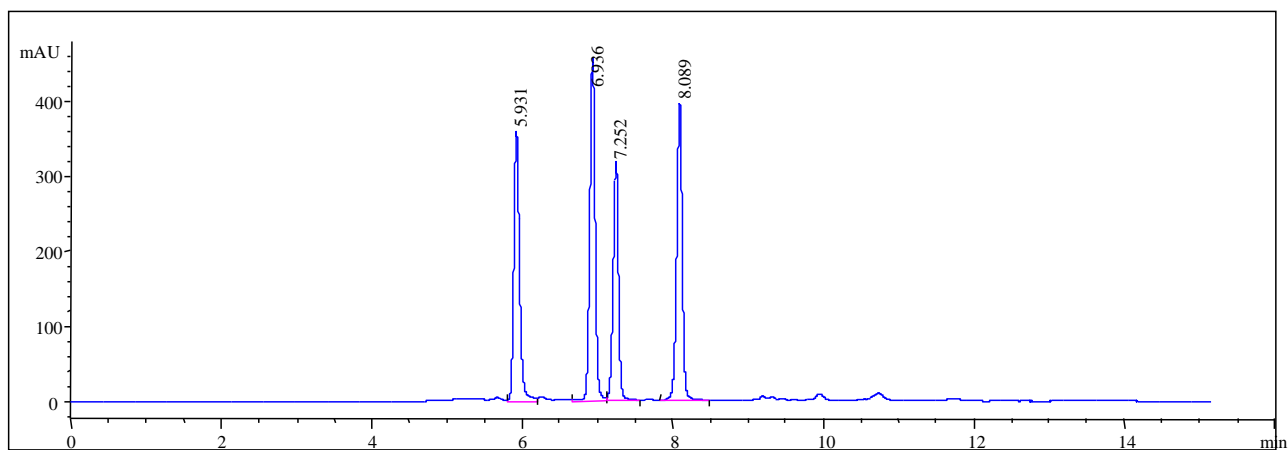




Analysis of Peptide Mixture on Zenix™-100 (7.8x300)



Column: Zenix™-100 (3 μm , 100 \AA , 7.8x300 mm)
Mobile Phase: ACN:H₂O:TFA=65:35:0.1(v/v)
Flow Rate: 1.0 mL/min
Temperature: Ambient
Detection: UV 214 nm
Injection Volume: 10 μL
Samples: Ribonuclease A (5.931 min), human insulin (6.936 min), thymosin α 1 (7.252 min), somatostatin (8.089 min)

Keywords: Size exclusion, Zenix, peptide, thymosin α 1, human insulin, Somatostatin