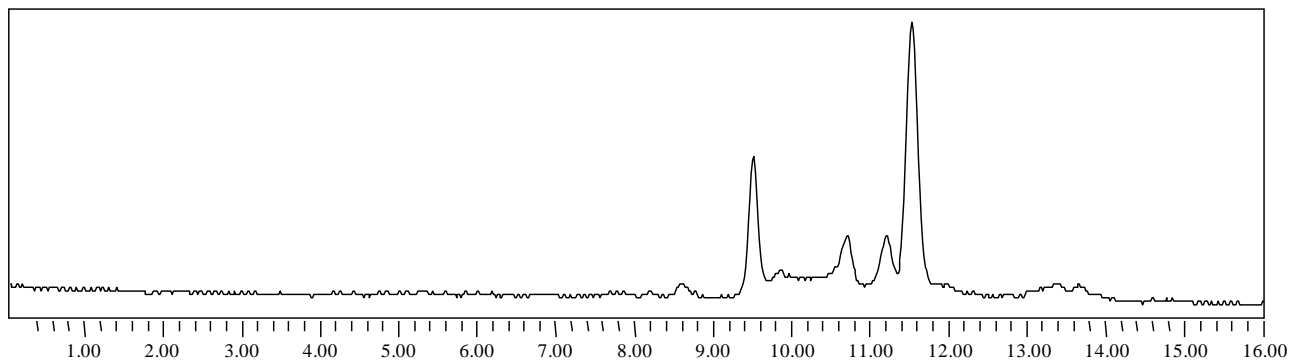




## High Resolution Separation of Peptides by Zenix™ SEC-150



Column: Zenix™ SEC-150 (3  $\mu\text{m}$ , 150  $\text{\AA}$ , 7.8x300 mm)  
Mobile Phase: 150 mM Phosphate Buffer, pH 7.0;  
Flow Rate: 1.0 mL/min  
Temperature: Ambient  
Detection: UV 214 nm  
Injection Volume: 20  $\mu\text{L}$   
Sample: Peptide mixture (provided by a customer)

Keywords: Size exclusion, Zenix, peptide