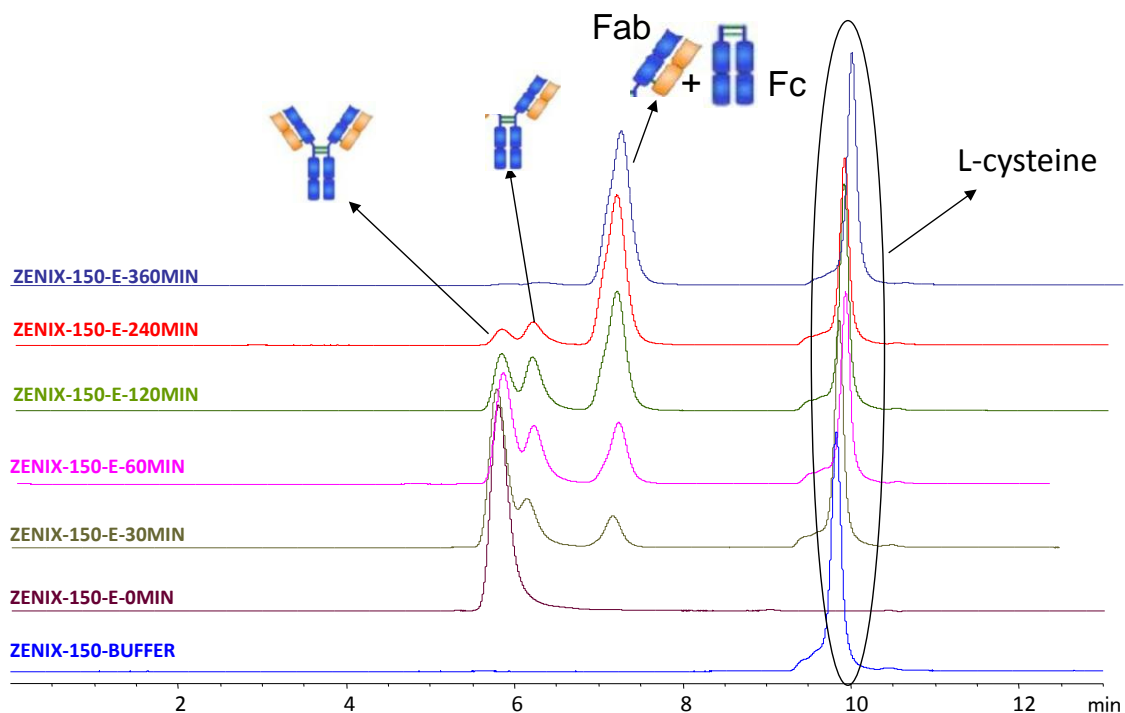


Analysis of Antibody Fragments from Papain Digestion on Zenix™ 150



Papain degradation condition:

Buffer: 5.0 mM L-Cysteine, 2.0 mM EDTA and 300 mM NaCl

Enzyme: 80 µg/mL papain

Temperature: 37 °C

Time: 30 min, 60 min, 120 min, 240 min, 360 min

Column:	Zenix™ SEC-150 (3 µm, 150 Å, 7.8x300 mm)
Mobile Phase:	20 mM phosphate buffer, pH 7.0, 150 mM NaCl
Flow Rate:	1.0 mL/min;
Temperature:	25 °C
Detection:	UV 280 nm
Injection Volume:	10 µL
Samples:	Erbitux digested by Papain

Keywords: Size exclusion, Zenix, monoclonal antibody, antibody fragments, antibody digestion, papain