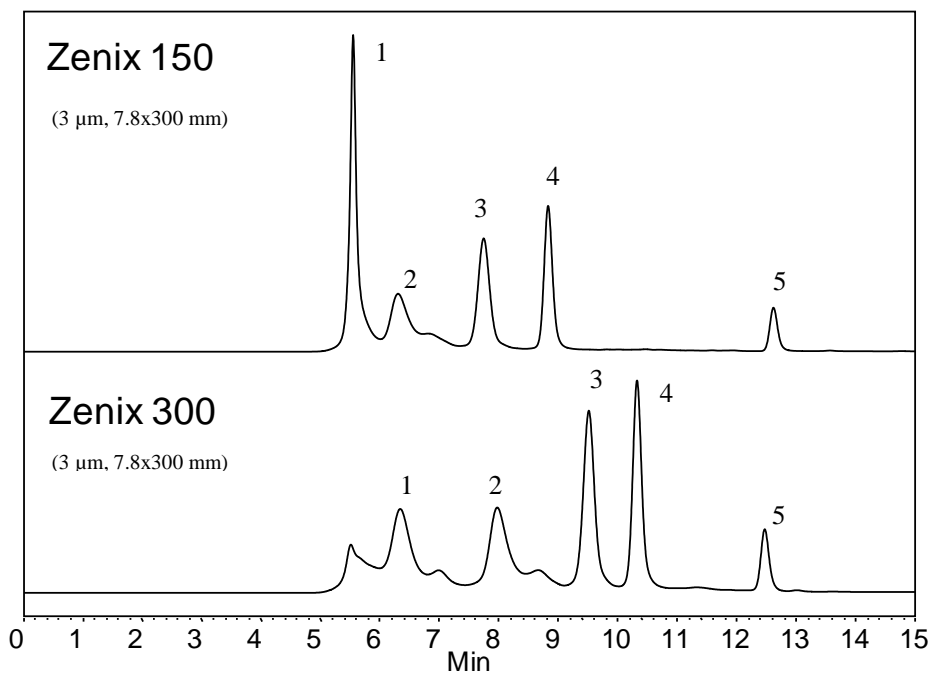




Separation of Protein Mixture by Zenix™ SEC Phases



Mobile Phase: 150 mM phosphate buffer, pH 7
Flow Rate: 1.0 mL/min
Temperature: Ambient
Detection: UV 214 nm
Injection Volume: 10 μL
Samples: 1) Thyroglobulin, 670 kD; 2) γ-Globulin, 158 kD; 3) Ovalbumin, 44 kD; 4) Ribonuclease A, 13.7 kD; 5) p-Aminobenzoic acid, 137 D

Keywords: Size exclusion, Zenix, proteins, pore size